

**TECHNICAL MANUAL**

**ORGANIZATIONAL AND DIRECT SUPPORT  
MAINTENANCE  
REPAIR PARTS AND SPECIAL TOOLS LIST  
FOR**

**SERVICE UNIT REFRIGERATION SYSTEM (MUST)  
(AMERTECH CORPORATION MODEL 1200-F-0001)  
NSN 4130-01-039-8124**

---

**HEADQUARTERS, DEPARTMENT OF THE ARMY  
14 DECEMBER 1979**

**ORGANIZATIONAL, AND DIRECT SUPPORT  
MAINTENANCE  
REPAIR PARTS AND SPECIAL TOOLS LIST**

**FOR**

**SERVICE UNIT, REFRIGERATION SYSTEM (MUST)  
(AMERTECH CORPORATION MODEL 1200-F-0001)  
NSN 4130-01-039-8124  
Current as of 8 October 1979**

**REPORTING OF ERRORS**

You can help improve this manual If you find any mistake or if you know of a way to improve the procedures, please let us know Mail your letter, DA Form 2028 (Recommended Changes to Publications and Blank Forms), or DA Form 2028-2 located in the back of this manual direct to Commander, U S Army Troop Support & Aviation Materiel Readiness Command, ATTN DRSTS-MTPS, 4300 Goodfellow Boulevard, St Louis. MO 63120 A reply will be furnished directly to you

**Table of Contents**

			Page	Illus Figure
Section	I.	Introduction.....	1	
Section	II.	Repair Parts List.....	7	
Group	01	Cover, door and panels.....	6	1
	02	Refrigeration change system.....	10	2
	03	Vaccum system.....	14	3
	04	Oil change system.....	18	4
	05	Electrical system.....	20	5
	06	Accessories.....	22	6
Section	III.	Special tools (Not applicable)		
Section	IV.	National Stock Number and part number index.....	25	

**i/(ii blank)**

Section I. INTRODUCTION

1. Scope.

This Manual lists spares and repair parts; special tools, special test, measurement, and diagnostic equipment (TMDE), and other special support equipment required for performance of organizational, and direct support, maintenance of the Unit It authorizes the requisitioning and issue of spares and repair parts as indicated by the source and maintenance codes

2. General.

This Repair Parts and Special Tools List is divided into the following sections

**a. Section II - Repair Parts List.** A list of spares and repair parts authorized for use in the performance of maintenance. The list also includes parts which must be removed for replacement of the authorized parts Parts lists are composed of functional groups ascending in numeric sequence, with the parts in each group listed in figure and item number sequence Bulk materials are listed in NSN sequence

**b. Section III - Special Tools List.** A list of special tools, special TMDE, and other special support equipment authorized for the performance of maintenance

**c. Section IV - National Stock Number and Part Number Index.** A list, in National item identification number (NIIN) sequence, of all National stock numbers (NSNO) appearing in the listings, followed by a list, in alphameric sequence of all part numbers appearing in the listings. National stock number and part numbers are cross-referenced to each illustration figure and item number appearance This index is followed by a cross-reference list of reference designators to figure and item numbers

3. Explanation of Columns.

**a. Illustration.** This column is divided as follows

**(1) Figure Number.** Indicates the figure number of the illustration in which the item is shown

**(2) Item Number.** The number used to identify item called out in the illustration

**b. Source, Maintenance, and Recoverability (SMR) Codes.**

**(1) Source Code.** Source codes indicate the

manner of acquiring support items for maintenance, repair, or overhaul of end items Source codes are entered in the first and second positions of the Uniform SMR Code format as follows

<b>Code</b>	<b>Definition</b>
<b>PA</b>	Item procured and stocked for anticipated or known usage.
<b>PB</b>	Item procured and stocked for insurance purposes because essentiality dictates that a minimum quantity be available in the supply systems.
<b>PC</b>	Item procured and stocked and which otherwise would be coded PA except that it is deteriorative in nature.
<b>PD</b>	Support item, excluding support equipment, procured for initial issue or outfitting and stocked only for subsequent or additional initial issues or outfittings Not subject to automatic replenishment.
<b>PE</b>	Support equipment procured and stocked for initial issue or outfitting to specified maintenance repair activities
<b>PF</b>	Support equipment which will not be stocked but which will be centrally procured on demand
<b>PG</b>	Item procured and stocked to provide for sustained support for the life of the equipment It is applied to an item peculiar to the equipment which, because of probable discontinuance or shutdown of production facilities, would prove uneconomical to reproduce at a later time
<b>KD</b>	An item of a depot overhaul/repair kit and not purchased separately Depot kit defined as a kit that provides items required at the time of overhaul or repair
<b>KF</b>	An item of a maintenance kit and not purchased separately Maintenance kit defined as a kit that provides an item that can be replaced at organizational or intermediate levels of maintenance
<b>KB</b>	Item included in both a depot overhaul/repair kit and a maintenance kit
<b>MO</b>	Item to be manufactured or fabricated at organizational level.
<b>MF</b>	Item to be manufactured or fabricated at the direct support maintenance level
<b>AO</b>	Item to be assembled at organizational

	level
<b>AF</b>	Item to be assembled at direct support maintenance level
<b>XA</b>	Item is not procured or stocked because the requirements for the item will result in the replacement of the next higher assembly
<b>XB</b>	Item is not procured or stocked. If not available through salvage, requisition
<b>XC</b>	Installation drawing, diagram, instruction sheet, field service drawing, that is identified by manufacturer's part number
<b>XD</b>	A support item that is not stocked. When required, item will be procured through normal supply channels

**NOTE**

***Cannibalization or salvage may be used as a source of supply for any items source coded above except those coded XA and aircraft support items as restricted by AR 700-42.***

**(2) Maintenance Code.** Maintenance codes are assigned to indicate the levels of maintenance authorized to USE and REPAIR support items. The maintenance codes are entered in the third and fourth positions of the Uniform SMR Code format as follows

**(a)** The maintenance code entered in the third position will indicate the lowest maintenance level authorized to remove, replace, and use the support item. The maintenance code entered in the third position will indicate one of the following levels of maintenance:

<b>Code</b>	<b>Application/Explanation</b>
<b>C</b>	Crew or operator maintenance performed within organizational maintenance
<b>O</b>	Support item is removed, replaced, used at the organizational level
<b>F</b>	Support item is removed, replaced, used at the direct support level

**(b)** The maintenance code entered in the fourth position indicates whether the item is to be repaired and identifies the lowest maintenance level with the capability to perform complete repair (i.e., all authorized maintenance functions) This position will contain one of the following maintenance codes

<b>Code</b>	<b>Application/Explanation</b>
<b>O</b>	The lowest maintenance level capable of complete repair of the support item is the organizational level
<b>F</b>	The lowest maintenance level capable of complete repair of the support item is the direct support level
<b>L</b>	Repair restricted to designated Specialized Repair Activity
<b>Z</b>	Nonreparable No repair is authorized
<b>B</b>	No repair is authorized The item may be reconditioned by adjusting, lubricating, etc, at the user level. No parts or special tools are procured for the maintenance of this item

**(3) Recoverability Code.** Recoverability codes are assigned to support items to indicate the disposition action on unserviceable items. The recoverability code is entered in the fifth position of the Uniform SMR Code format as follows:

**Recoverability**

<b>Codes</b>	<b>Definition</b>
<b>Z</b>	Nonreparable item When unserviceable, condemn and dispose at the level indicated in position 3
<b>O</b>	Reparable item When uneconomically repairable, condemn and dispose at organizational level
<b>F</b>	Reparable item When uneconomically repairable, condemn and dispose at the direct support level
<b>L</b>	Reparable item Repair, condemnation, and disposal not authorized below depot/specialized repair activity level
<b>A</b>	Item requires special handling or condemnation procedures because of specific reasons (i.e., precious metal content, high dollar value, critical material or hazardous material) Refer to appropriate manuals/directives for specific instructions

**c. National Stock Number.** Indicates the National stock number assigned to the item and will be used for requisitioning purposes.

**d. Part Number.** Indicates the primary number used by the manufacturer which controls the design and characteristics of the item by means of its engineering drawings, specifications, standards, and inspection requirements to identify an item or

range of items.

**NOTE**

**When a stock numbered item is requisitioned, the repair part received may have a different part number than the part being replaced.**

**e. Federal Supply Code for Manufacturer (FSCM).** The FSCM is a 5-digit numeric code listed in SB 708-42 which is used to identify the manufacturer, distributor, or Government agency, etc

**f. Description.** Indicates the Federal item name and, if required, a minimum description to identify the item Items that are included in kits and sets are listed below the name of the kit or set with the quantity of each item in the kit or set indicated in the quantity incorporated in unit column When the part to be used differs between serial numbers of the same model, the effective serial numbers are shown as the last line of the description In the Special Tools List, the initial basis of issue (BOI) appears as the last line in the entry for each special tool, TMDE, and support equipment. When density of equipments supported exceeds density spread indicated in the basis of issue, the total authorization is increased accordingly

**g. Unit of Measure (U/M).** Indicates the standard of the basic quantity of the listed item as used in performing the actual maintenance function. This measure is expressed by a two-character alphabetical abbreviation (e g , ea, in, pr, etc) When the unit of measure differs from the unit of issue, the lowest unit of issue that will satisfy the required units of measure will be requisitioned

**h. Quantity Incorporated in Unit.** Indicates the quantity of the item used in the breakout shown on the illustration figure, which is prepared for a functional group, subfunctional group, or an assembly A "V" appearing in this column in lieu of a quantity indicates that no specific quantity is applicable (e g, shims, spacers, etc

**4. Special Information.**

Repair parts kits and gasket sets appear as the last entries in the repair parts listing for the figure

in which its parts are listed as repair parts or are listed at the end of the repair parts listing for the last figure containing parts of the kit

**5. How to Locate Repair Parts.**

**a. When National Stock Number or Part Number is Unknown:**

**(1) First.** Using the table of contents, determine the functional group within which the repair part belongs This necessary since illustrations are prepared for functional groups, and listings are divided into the same groups

**(2) Second.** Find the illustration covering the functional group to which the item belongs

**(3) Third.** Identify the item on the illustration and note the illustration figure and item number of the repair part

**(4) Fourth.** Using the Repair Parts Listing, find the figure and item number noted on the illustration

**b. When National Stock Number or Part Number is Known.**

**(1) First.** Using the Index of National Stock Numbers and Part Numbers, find the pertinent National stock number or part number This index is in NTIN sequence followed by a list of part numbers in alphameric sequence, cross-referenced to the illustration figure number and item number

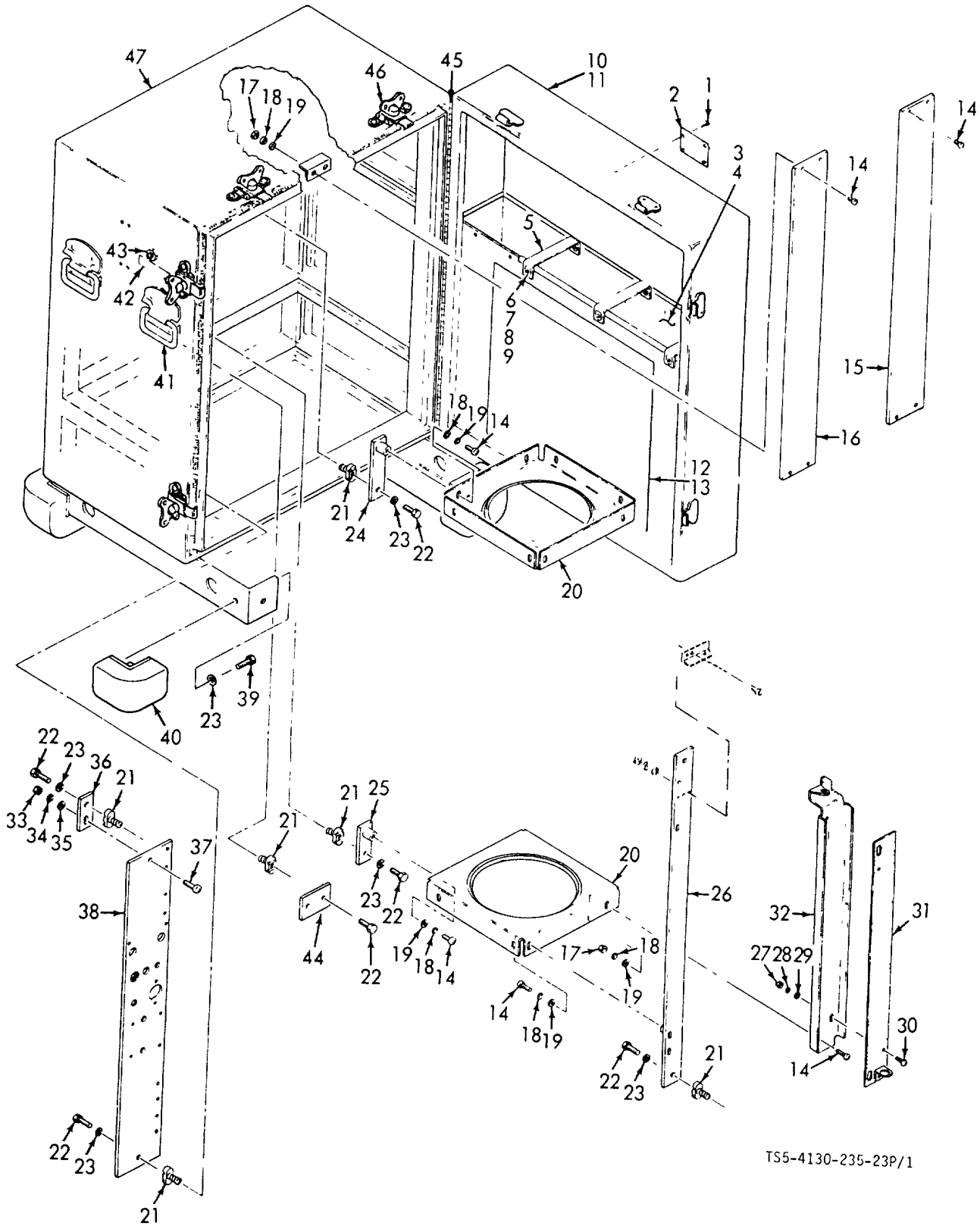
**(2) Second.** After finding the figure and item number, locate the figure and item number in the repair parts list

**c. The following publications pertain to the Generator Set and its components.**

TM 5-4130-235-13	Operator, Organizational, Direct Support Maintenance Manual
------------------	---

**6. Abbreviations.**

Abbreviations	Explanation
ASSY	Assembly
ID	Inside Diameter
HD	Head
HEX	Hexagon
ILLUS	Illustration
IN	Inches
EA	Each
Fig	Figure
FT	Foot
MTG	Mounting
NO	Number
RH	Right Hand
SMR	Source, Maintenance and Recoverability
THD	Threads



TS5-4130-235-23P/1

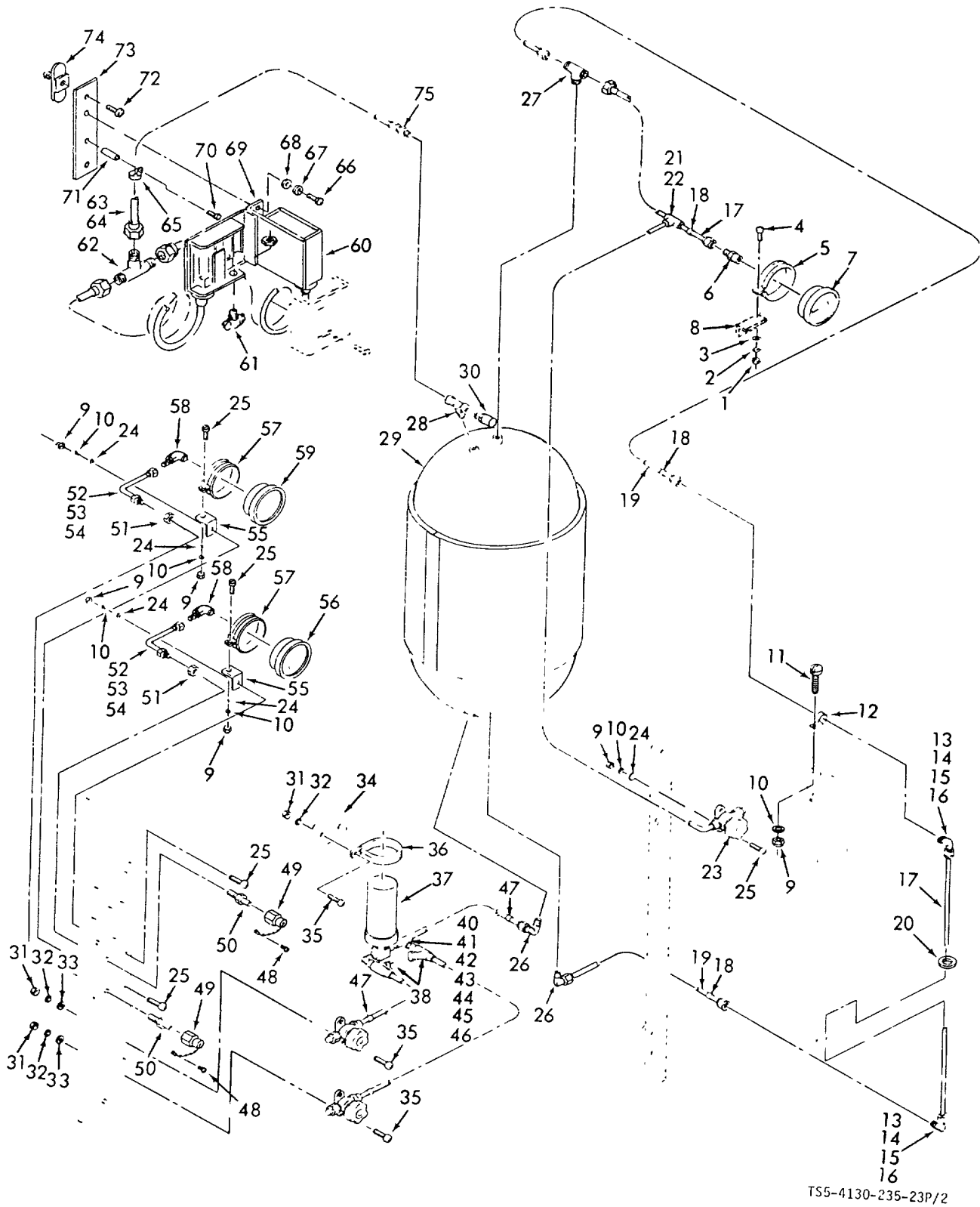
Figure 1. Cover, door and Panels

TS5-4130-235-23P/1

(1) ILLUSTRATION		(2)	(3)	(4)	(5)	(6)	(7)	(8)
(a) FIG NO.	(b) ITEM NO.	SMR CODE	NATIONAL STOCK NUMBER	PART NUMBER	FSCM	DESCRIPTION  USABLE ON CODE	U/M	QTY INC IN UNIT
						SECTION II -REPAIR PARTS LIST GROUP 01 - COVER, 000RS, AND PANELS		
1	1	PAFZZ	5305-00-088-9485	AN530C6-4	88044	SCREW, MACHINE.....	EA	4
1	2	XBFZZ		1200C0135	51913	PLATTE, IDENTIFICATION.....	EA	1
1		XBFZZ		1200R0102	51913	DOOR ASSEMBLY.....	EA	1
1	3	XBFZZ		MILP26514CL 2TY1	81349	.FOAM, POLYURETHANE.....	EA	1
1	4	PBFZZ	8030-00-903-6566	RTV732	71984	.ADHESIVE.....	EA	1
1	5	XBFZZ		1200C0105	51913	.STRAP ASSEMBLY.....	EA	3
1	6	PAFZZ	5325-00-171-4692	AN227-48	88044	.STUD, SNAP FASTENER.....	EA	6
1	7	PAFZZ	5305-00-054-6651	MS51957-27	96906	SCREW, MACHINE.....	EA	6
1	8	PAFZZ	5310-00-929-6395	MS35338-136	96906	.WASHER, LOCK.....	EA	6
1	9	PAFZZ	5310-00-054-0041	NAS620C6L	80205	WASHER, FLAT.....	EA	6
1	10	XBFZZ		TC105A	59730	.BRACKET, TIE DOWN.....	EA	1
1	11	XBFZZ		1200R0107	51913	.DOOR, WELDMENT.....	EA	1
1	12	XBFZZ		1200R0145	51913	DECAL, INSTRUCTION.....	EA	1
1	13	PAFZZ	5305-00-477-0120	MS51861-46C	96906	SCREW, MACHINE.....	EA	9
1	14	PAFZZ	5305-00-059-3661	MS51958-65	96906	SCREW, MACHINE.....	EA	16
1	15	XBOZZ		1200C0103	51913	SHIELD.....	EA	1
1	16	XBFZZ		1200C0104	51913	SHIELD.....	EA	1
1	17	PAFZZ	5310-00-934-9765	MS'35650-304	96906	NUT, PLAIN, HEXAGON.....	EA	15
1	18	PAFZZ	5310-00-933-8120	MS35338-138	96906	WASHER, LOCK.....	EA	42
1	19	PAFZZ	5310-00-167-0812	AN96OC10L	88044	WASHER, FLAT.....	EA	22
1	20	XBFZZ		1200D0115	51913	BRACKET ASSEMBLY, TANK.....	EA	2
1	21	PAFZZ	5310-00-846-5948	P1007	96195	NUT, SELF-LOCKING.....	EA	15
1	22	PAFZZ	5306-00-226-4827	MS90728-34	96906	SCREW, CAP, HEXAGON HEAD.....	EA	15
1	23	PAFZZ	5310-00-974-6623	MS35338-140	96906	WASHER, LOCK.....	EA	19
1	24	XBFZZ		1200C0106	51913	BRACKET, UPPER.....	EA	4
1	25	XBFZZ		1200C0211	51913	BRACKET, LOWER.....	EA	4
1	26	XBFZZ		1200D0114	51913	PANEL, VALVE.....	EA	1
1		XBFZZ		1200R0205	51913	TANK SCALE SUBASSEMBLY.....	EA	1
1	27	PAFZZ	5310-00-934-9765	MS35650-304	96906	.NUT, PLAIN, HEXAGON.....	EA	12
1	28	PAFZZ	5310-00-933-8120	MS35338-138	96906	.WASHER, LOCK.....	EA	2
1	29	PAFZZ	5310-00-167-0812	AN96OC10L	88044	.WASHER, FLAT.....	EA	2
1	30	PAFZZ	5305-00-059-3659	MS51958-63	96906	SCREW, MACHINE.....	EA	2
1	31	XBFZZ		1200D0203	51913	.SCALE, TANK.....	EA	1
1	32	XBFZZ		1200D0204	51913	BRACKET, SCALE.....	EA	1
1	33	PAFZZ	5310-00-043-0520	MS35650-3252	96906	NUT, PLAIN, HEXAGON.....	EA	1
1	34	PAFZZ	5310-00-933-8121	MS35338-139	96906	WASHER, LOCK.....	EA	1
1	35	PAFZZ	5310-00-205-8924	AN960C416L	88044	WASHER, FLAT.....	EA	1
1	36	XBFZZ		1200C0123	51913	BRACKET.....	EA	1
1	37	PAFZZ	5305-00-059-5432	MS51958-82	96906	SCREW, MACHINE.....	EA	1
1	38	XBFZZ		1200R0133	51913	CONTROL PANEL ASSEMBLY.....	EA	1
1	39	PAFZZ	5306-00-226-4824	MS90728-31	96906	SCREW, CAP, HEXAGON HEAD.....	EA	2



(1) ILLUSTRATION		(2)	(3)	(4)	(5)	(6) DESCRIPTION	(7)	(8)
(a) FIG NO.	(b) ITEM NO.	SMR CODE	NATIONAL STOCK NUMBER	PART NUMBER	FSCM	USABLE ON CODE	U/M	QTY INC IN UNIT
1	40	PBFZZ		1200C0122	51913	FOOT.....	EA	4
1	41	XBFZZ		MS35793-1	96906	HANDLE, BAIL CREST .....	EA	4
1	42	XBFZZ		1200F0001-80	51913	DECAL, WARNING .....	EA	1
1	43	PBFZZ	4820-01-065-1783	1200F0001-81	51913	VALVE, PRESS RELIEF .....	EA	1
1	44	XBFZZ		1200B0134	51913	SPACER.....	EA	1
1		XBFZZ		1200R0100	51913	ENCLOSURE ASSEMBLY .....	EA	1
1	45	PAFZZ	5340-01-054-6090	MS35822-10D	96906	.HINGE, BUTT.....	EA	1
1	46	PAFZZ	5340-00-680-4375	3	82240	.FASTENER, LINK LOCK.....	EA	4
1	47	XBFZZ		1200P0113	51913	ENCLOSURE .....	EA	1
1	48	PAFZZ	9320-00-141-7168	MILR6130 TYPE 1 GRADE B	81349	RUBBER CELLULAR .....	FT	1



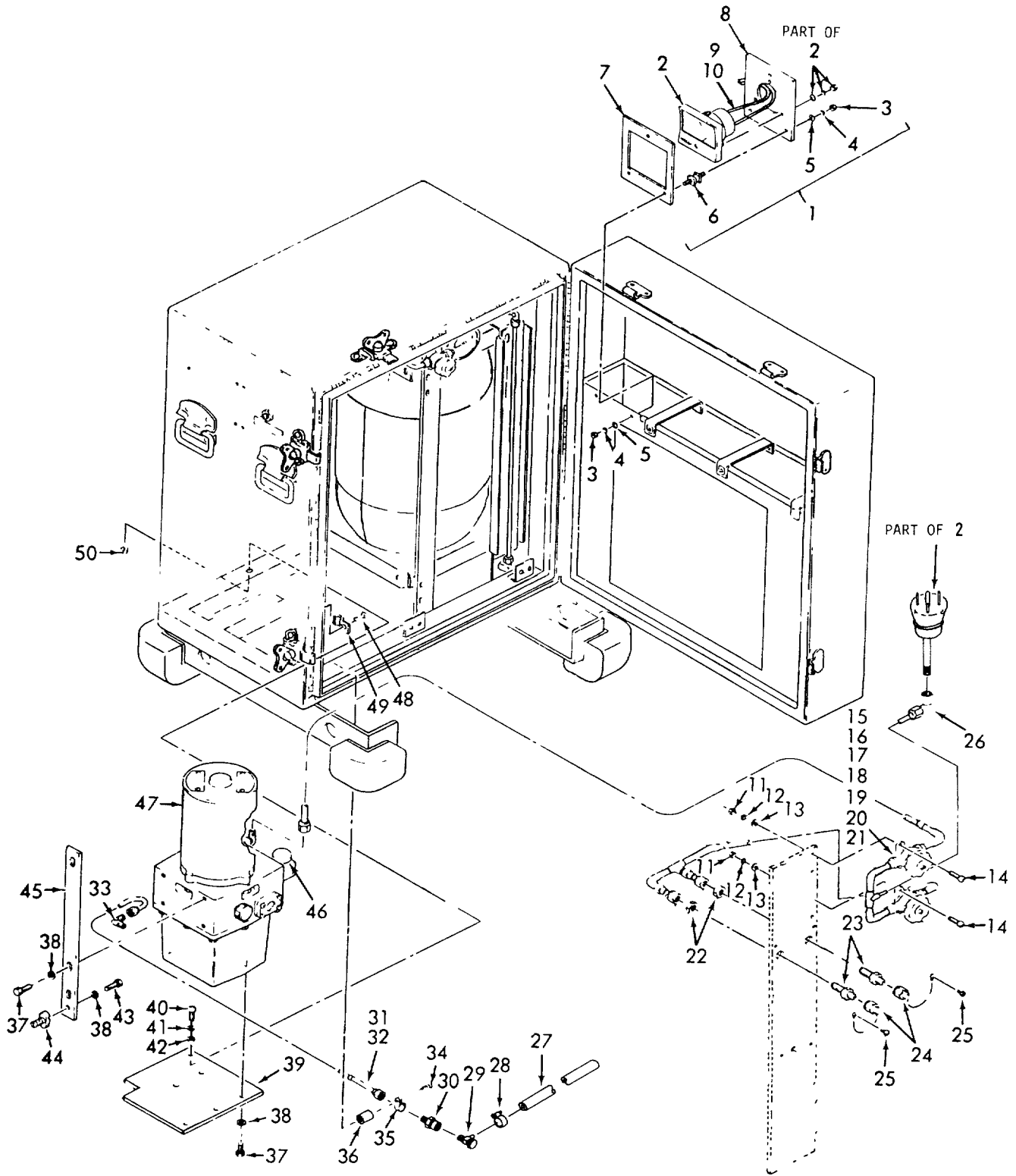
TS5-4130-235-23P/2

Figure 2. Refrigeration Charge system

TS5-4130-235-23P/2

(1) ILLUSTRATION		(2)	(3)	(4)	(5)	(6) DESCRIPTION	(7)	(8)
(a) FIG NO.	(b) ITEM NO.	SMR CODE	NATIONAL STOCK NUMBER	PART NUMBER	FSCM	USABLE ON CODE	U/M	QTY INC IN UNIT
						GROUP 02 - REFRIGERATION CHARGE SYSTEM		
2		XBFZZ		1200C0209	51913	GAGE SUBASSEMBLY, TANK.....	EA	1
2	1	PAFZZ	5310-00-934-9765	MS35650-304	96906	NUT, PLAIN, HEXAGON.....	EA	1
2	2	PAFZZ	5310-00-933-8120	MS35338-138	96906	.WASHER, LOCK.....	EA	1
2	3	PAFZZ	5310-00-167-0812	AN960C10L	88044	.WASHER, FLAT.....	EA	1
2	4	PAFZZ	5305-00-059-3659	MS51958-63	96906	.SCREW, MACHINE.....	EA	1
2	5	XBOZZ		NAS1713D42N	80205	.CLAMP, LOOP.....	EA	1
2	6	PAOZZ	4730-00-720-0102	A4624	41947	CONNECTOR.....	EA	1
2	7	PAOZZ	6685-01-012-3286	25-1009AC02330 X150 PSIG	04146	.GAGE, PRESSURE.....	EA	1
2	8	XBFZZ		1200C0210	51913	BRACKET, GAGE.....	EA	1
2	9	PAFZZ	5310-00-934-9765	MS35650-304	96906	NUT, PLAIN, HEXAGON.....	EA	8
2	10	PAFZZ	5310-00-933-8120	MS35338-138	96906	WASHER, LOCK.....	EA	8
2	11	PAFZZ	5305-00-059-3659	MS51958-63	96906	SCREW, MACHINE.....	EA	1
2	12	PAFZZ	5340-00-514-3010	MS21919-DH6	96906	CLAMP.....	EA	1
2	13	PAFZZ	4730-00-814-5369	600-9	02570	ELBOW, UNION.....	EA	2
2	14	PAFZZ	4730-00-189-2739	A5052	41947	NUT, FLARE.....	EA	2
2	15	XBFZZ		A1063	96195	FITTING, FLAT PLATE.....	EA	4
2	16	XBFZZ		B600R1-6	02570	REDUCER, BULKHEAD.....	EA	2
2	17	XBFZZ		1200-C-0147	51913	TUBING, TRANSPARENT.....	EA	1
2	18	PAFZZ		WCBT0R1	13476	TAPE, PIPE BANDING.....	YD	1
2	19	XBFZZ		1200-C-0155	51913	TUBE ASSEMBLY.....	EA	2
2	20	XBFZZ		B-531-406	96195	BUSHING, SNAP.....	EA	1
2		XBFZZ		1200D0201	51913	VALVE, VENT.....	EA	1
2	21	PAFZZ	4730-00-189-2739	MS35872-3	96906	NUT FLARE.....	EA	2
2	22	PAFZZ	4730-00-263-6460	W4000	41947	TEE.....	EA	1
2	23	PAFZZ	4820-01-007-3280	234A6	58553	VALVE, PURGE.....	EA	1
2	24	PAFZZ	5310-00-167-0812	AN960C10L	88044	WASHER, FLA, T.....	EA	8
2	25	PAFZZ	5305-00-059-3661	MS51958-65	96906	SCREW, MACHINE.....	EA	6
2		XBFZZ		1200R0124	51913	TANK SUBASSEMBLY.....	EA	1
2	26	PAFZZ	4730-00-288-9438	A337	41947	.ELBOW.....	EA	2
2	27	PAFZZ		TI-6B	41947	.TEE, MALE.....	EA	1
2	28	PAFZZ	4730-00-088-8666	3600X4	79470	.TEE, PIPE.....	EA	1
2	29	PBFZZ		1200D0101	51913	.TANK.....	EA	1
2	30	PBFZZ		3001-125	58553	RELIEF VALVE.....	EA	1
2		XBFZZ		120R02000	51913	PLUMBING ASSEMBLY, REFRIGERENT.....	EA	1
2	31	PAFZZ	5310-00-934-9765	MS35650-304	96906	.NUT, PLAIN, HEXAGON.....	EA	1
2	32	PAFZZ	5310-00-933-8120	MS35338-138	96906	WASHER, LOCK.....	EA	1
2	33	PAFZZ	5310-00-167-0B12	AN960C10L	98044	.WASHER, FLAT.....	EA	1
2	34	XBFZZ		1200C0212	51913	.BRACKET, FILTER.....	EA	1
2	35	PAFZZ	5305-00-059-3661	MS51958-65	96906	.SCREW MACHINE.....	EA	1
2	36	PAFZZ	5340-00-419-7847	NAS1713D32N	80205	.CLAMP, LOOP.....	EA	1
2	37	PAFZZ	4130-00-001-8000	T-8	87696	.DEHYDRATOR, DESICCANT.....	EA	1

(1) ILLUSTRATION		(2)	(3)	(4)	(5)	(6) DESCRIPTION	(7)	(8)
(a) FIG NO.	(b) ITEM NO.	SMR CODE	NATIONAL STOCK NUMBER	PART NUMBER	FSCM	USABLE ON CODE	U/M	QTY INC IN UNIT
2	38	PBFZZ	4820-00-614-5715	802A6S	58553	.VALVE, CHECK .....	EA	2
2	39	PBFZZ	4820-01-007-328C	234A6	58553	.VALVE, PURGE .....	EA	2
2	40	PAFZZ	4730-00-263-646C	W4000	41947	.TEE .....	EA	1
2	41	PAFZZ		R1BA	58553	.BUSHING, HEXAGON .....	EA	1
2	42	PAFZZ		B810-61-BAN	02570	.UNION .....	EA	2
2	43	PAFZZ	4730-00-189-2739	MS35872-3	96906	.NUT, FLARE .....	EA	1
2	44	PAFZZ	4730-00-818-5201	W2009	41947	.ELBOW .....	EA	1
2	45	PAFZZ		TDE-35	87698	.CONNECTOR, TEE .....	EA	1
2	46	PAFZZ	4730-00-988-9135	603-1-2X1-4	12168	.ADAPTER .....	EA	1
2	47	PAFZZ	7510-00-B36-9902	471	76381	.TAPE, PIPE BANDING .....	YD	1
2	48	XDFZZ	5305-00-054-5647	MS51957-13	96906	.SCREW, MACHINE .....	EA	2
2	49	XBFZZ		6209-6-4-2	20282	.CAP, FITTING, W/CHAIN .....	EA	2
2	50	PAFZZ	4730-00-409-3903	B400-61-4AN	02570	.NIPPLE, TUBE .....	EA	2
2	51	XBFZZ		B-412-61	96195	.NUT, JAM .....	EA	2
2	52	XBFZZ		1200C0131	51913	TUBE ASSEMBLY .....	EA	2
2	53	PAFZZ	4730-00-189-2737	NS4-4	58553	.NUT, FLARE .....	EA	2
2	54	PAFZZ	7510-00-634-2941	PPP-T-66	81348	TAPE, PIPE BANDING .....	YD	1
2	55	XBFZZ		1200B0130	51913	BRACKET, GAGE .....	EA	2
2	56	PAFZZ		25-1009AC02B	04146	GAGE, PRESSURE .....	EA	1
				30X150 PSIG				
2	57	PAFZZ		NAS1713D42N	80205	CLAMP, LOOP .....	EA	2
2	58	PAFZZ		E3-4B	58553	ELBOW .....	EA	2
2	59	PAFZZ	6685-01-014-8703	25-1009AC02	38056	GAGE, PRESSURE .....	EA	1
				B30-0-60				
2	60	XDFZZ	5930-00-945-1822	P70CA1	50831	SWITCH, PRESSURE .....	EA	2
2	61	XBFZZ		1041	33342	BOX CONNECTOR .....	EA	2
2	62	PAFZZ	4730-00-816-7753	A4994	41947	TEE .....	EA	1
2	63	XBFZZ		1200C0139	51913	TUBE ASSEMBLY .....	EA	2
2	64	PAFZZ	4730-00-189-2730	A5052	41947	.NUT, FLARE .....	EA	2
2	65	PAFZZ	5340-00-997-2964	MS21322-36	96906	CLAMP, LOOP .....	EA	2
2	66	PAFZZ	5305-00-059-3659	MS51958-63	96906	SCREW, MACHINE .....	EA	2
2	67	PAFZZ	5310-00-933-B12C	MS35338-138	96906	WASHER, LOCK .....	EA	2
2	68	PAFZZ	5310-00-167-0812	AN960C10L	88044	WASHER, FLAT .....	EA	2
2	69	XBFZZ		1200D0136	51913	BRACKET .....	EA	1
2	70	PAFZZ	5305-01-053-5003	MS51958-66B	96906	SCREW, MACHINE .....	EA	1
2	71	XBFZZ		1200B0138	51913	SPACER .....	EA	1
2	72	PAFZZ	5306-00-226-483C	MS90728-37	96906	BOLT, MACHINE .....	EA	1
2	73	XBFZZ		1200C0137	51913	BAR, PRESSURE SWITCH .....	EA	1
2	74	PAFZZ	5310-00-844-594E	P1007	96195	NUT, SELF-LOCKING .....	EA	1
2	75	XBFZZ		U1-6B	58553	CONNECTOR, MALE .....	EA	1



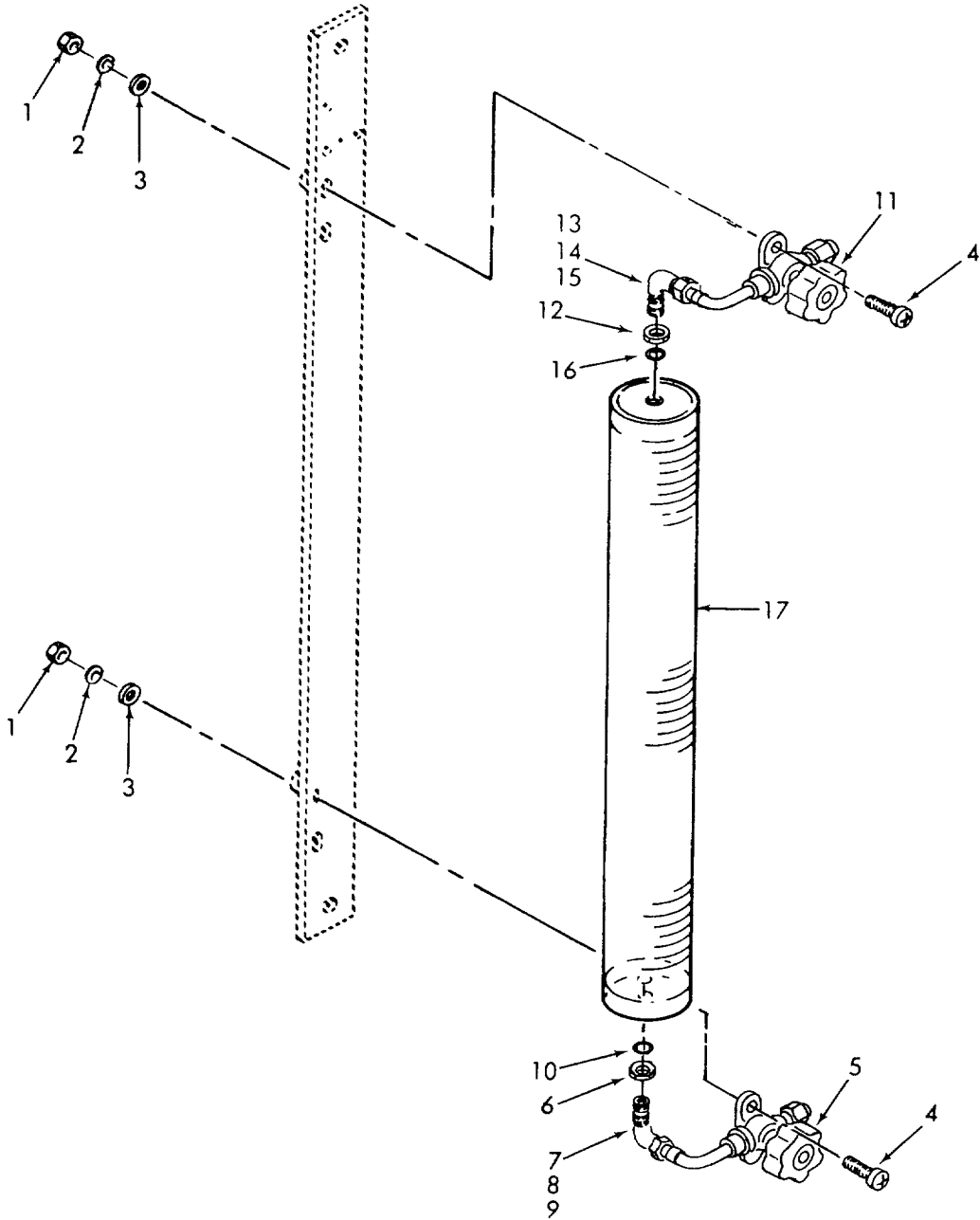
TS5-4130-235-23P/3

Figure 3. Vacuum System

TS5-4130-235-23p/3

(1) ILLUSTRATION		(2)	(3)	(4)	(5)	(6)	(7)	(8)
(a) FIG NO.	(b) ITEM NO.	SMR CODE	NATIONAL STOCK NUMBER	PART NUMBER	FSCM	DESCRIPTION  USABLE ON CODE	U/M	QTY INC IN UNIT
						GROUP 03 - VACUUM SYSTEM		
3	1	XBFZZ		1200D0121	51913	GAGE ASSEMBLY, VACUUM.....	EA	1
3	2	PAFZZ	6685-01-043-2408	NRC801	04399	.THERMOCOUPLE, GAGE.....	EA	1
3	3	PAFZZ	5310-00-934-9757	MS35649-282	96906	.NUT, PLAIN, HEXAGON.....	EA	6
3	4	PAFZZ	5310-00-933-8119	MS35338-137	96906	.WASHER, LOCK.....	EA	6
3	5	PAFZZ	5310-00-880-5975	NAS62OCBL	80205	.WASHER, FLAT.....	EA	6
3	6	PBFZZ		10Z1-323B	14519	.ISOLATOR, SHOCK.....	EA	3
3	7	XBFZZ		1200C0111	51913	.PANEL.....	EA	1
3	8	XBFZZ		1200C0110	51913	.BRACKET.....	EA	1
3	9	XBFZZ		BENHAR1151	74103	.SLEEVING, INSULATED.....	EA	1
3	10	XBFZZ		TY24M	59730	.TY-RAP.....	EA	1
3	11	PAFZZ	5310-00-934-9765	MS35650-304	96906	NUT, PLAIN, HEXAGON.....	EA	4
3	12	PAFZZ	5310-00-933-8120	MS35338-138	96906	WASHER, LOCK.....	EA	4
3	13	PAFZZ	5310-00-167-0812	AN96OC10L	88044	WASHER, FLAT.....	EA	4
3	14	PAFZZ	5305-00-989-7434	MS35207-263	96906	SCREW, MACHINE.....	EA	4
3		XBFZZ		1200R0132	51913	VALVE ASSEMBLY.....	EA	1
3	15	PAFZZ	4730-0G-263-6472	W4006	41947	.TEE.....	EA	2
3	16	PAFZZ	4730-00-254-6450	W2022	41947	.ELBOW.....	EA	7
3	17	PAFZZ	4730-00-988-9139	603-1-2X1-4	12168	.ADAPTER.....	EA	2
3	18	PBFZZ	4820-00-102-9739	216-10S	58553	.VALVE, LINE SHUTOFF.....	EA	2
3	19	PAFZZ	4730-00-277-7542	W1315	41947	.REDUCER.....	EA	2
3	20	PAFZZ	4730-00-189-2742	NS4-10	58553	.NUT, FLARE.....	EA	1
3	21	PAFZZ	7510-00-074-5122	PPP-T-60	81348	.TAPE, PIPE BANDING.....	EA	1
3	22	PAFZZ	5310-00-998-5023	AN924-8J	88044	NUT, JAM.....	EA	2
3	23	PAEZZ	4730-00-698-4034	AN832-8J	88044	UNION, BULKHEAD.....	EA	2
3	24	IXBFZZ		6209-8-4-2	20282	CAP, FITTING, W/CHAIN.....	EA	2
3	25	PAFZZ	5305-00-054-6670	MS51957-45	96906	SCREW, MACHINE.....	EA	2
3	26	XBFZZ		4-D8TX	30780	ELBOW, FEMALE.....	EA	1
3	27	PBFZZ		ZZT831 TYPE VI CLASS 6	81348	HOSE.....	FT	1
3	28	PAFZZ	4730-00-421-9430	QS800M4H	08484	CLAMP, HOSE.....	EA	1
3		XBFZZ		1200C0118	51913	DRAIN, SUBASSEMBLY.....	EA	1
3	29	PBFZZ	4820-01-024-0234	41-1734	64484	.VALVE, DRAIN.....	EA	1
3	30	PAFZZ		E3-6B	58553	.ELBOW.....	EA	1
3	31	PAFZZ	4730-00-189-2739	MS35872-3	96906	.NUT, FLARE.....	EA	1
3	32	XBFZZ		1200C0154	51913	.DRAIN, TUBE.....	EA	1
3	33	PAFZZ	4730-00-288-9438	E1-6B	58553	.ELBOW.....	EA	2
3	34	PAFZZ	5305-01-053-5003	MS51958-66B	96906	SCREW MACHINE.....	EA	1
3	35	PAFZZ	4730-00-698-4034	MS21332-36	96906	CLAMP, LOOP.....	EA	1
3	36	XBFZZ		1200C0157	51913	BRACKET, OIL TUBE.....	EA	1
3	37	PAFZZ	5306-00-226-4824	MS90728-31	96906	SCREW, CAP, HEXAGON HEAD.....	EA	4
3	38	PAFZZ	5310-00-974-6623	MS35338-140	96906	WASHER, LOCK.....	EA	5
3	39	XBFZZ		1200D0117	51913	BASE PLATE, PUMP.....	EA	1

(1) ILLUSTRATION		(2)	(3)	(4)	(5)	(6) DESCRIPTION	(7)	(8)
(a) FIG NO.	(b) ITEM NO.	SMR CODE	NATIONAL STOCK NUMBER	PART NUMBER	FSCM	USABLE ON CODE	U/M	QTY INC IN UNIT
3	40	PAFZZ	5305-00-059-5432	MS51958-82	96906	SCREW, MACHINE.....	EA	2
3	41	PAFZZ	5310-00-933-8121	MS35338-139	96906	WASHER, LOCK.....	EA	2
3	42	PAFZZ	5310-00-205-8924	AN96OC416L	88044	WASHER, FLAT.....	EA	2
3	43	PAFZZ	5306-00-226-4827	MS90728-34	96906	SCREW, CAP, HEXAGON HEAD.....	EA	1
3	44	PAFZZ	5310-00-846-5948	P1007	96195	NUT, SELF-LOCKING.....	EA	1
3	45	XBFZZ		1200C0108	51913	BRACKET, PUMP.....	EA	2
3	46	XBFZZ		1200C0112	15913	PUMP, OIL FILL.....	EA	1
3	47	PBFZZ	4130-01-040-8130	8810-B	64484	VACUUM PUMP.....	EA	1
3	48	XDFZZ	5305-00-054-5647	MS51957-13	96906	SCREW, MACHINE.....	EA	1
3	49	XBFZZ		1200B0140	51913	CLIP HOSE.....	EA	1
3	50	PAFZZ	5310-00-043-0520	MS35650-3252	96906	NUT, PLAIN, HEXAGON.....	EA	1



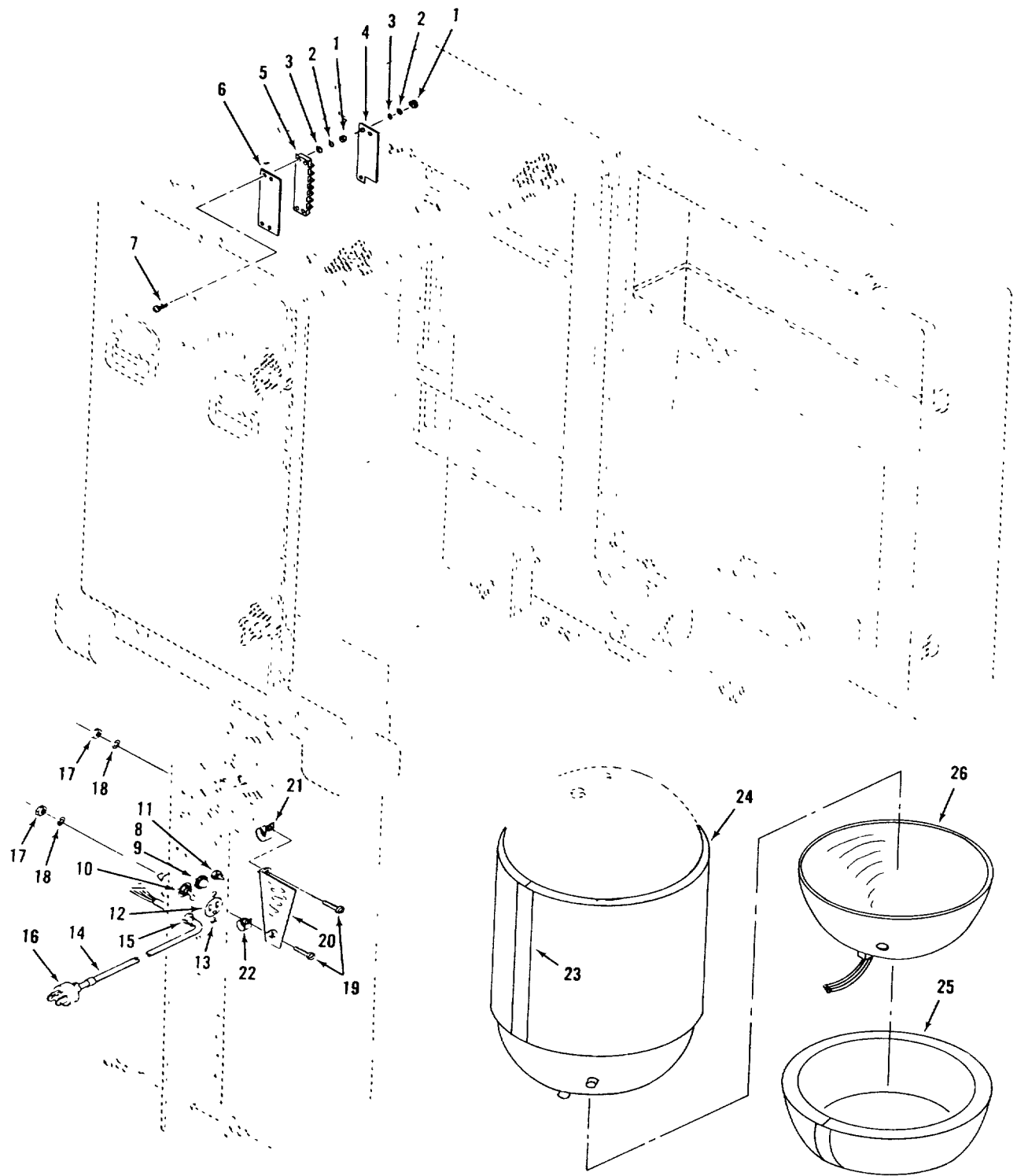
TS5-4130-235-23P/4

Figure 4. Oil Charge System

TS5-4130-235-23P/4



(1) ILLUSTRATION		(2)	(3)	(4)	(5)	(6) DESCRIPTION	(7)	(8)
(a) FIG NO.	(b) ITEM NO.	SMR CODE	NATIONAL STOCK NUMBER	PART NUMBER	FSCM	USABLE ON CODE	U/M	QTY INC IN UNIT
						GROUP 04 - OIL CHARGE SYSTEM		
4	1	PAFZZ	5310-00-934-9765	MS35650-304	96906	NUT, PLAIN, HEXAGON.....	EA	4
4	2	PAFZZ	5310-00-933-8120	MS35338-138	96906	WASHER, LOCK.....	EA	4
4	3	PAFZZ	5310-00-167-0812	AN96C1IOL	88044	WASHER, FLAT.....	EA	4
4	4	PAFZZ	5305-00-059-3661	MS51958-65	96906	SCREW, MACHINE.....	EA	4
4		XBFZZ		1200C0125	51913	VALVE ASSEMBLY OIL CHARGE.....	EA	1
4	5	PBFZZ	4822-00-789-0417	234A4	58553	.VALVE, PURGE.....	EA	2
4	6	PAFZZ	5310-00-079-1967	AN924-4J	88044	.NUT, PLAIN, HEXAGON.....	EA	2
4	7	PAFZZ	4730-00-530-6115	AN833-4J	88044	.ELBOW, UNION.....	EA	1
4	8	PAFZZ	4730-00-800-3554	MIS51531B4S	96906	.NUT, FLARE.....	EA	1
4	9	PAFZZ	4730-00-629-0868	MS51533B4S	96906	.SLEEVE, COMPRESSION.....	EA	1
4	10	XBFZZ		3-904V747-75	02697	.PACKING, PREFORMED.....	EA	2
4		XBFZZ		1200C0109	51913	VALVE ASSEMBLY OIL CHARGE.....	EA	1
4	11	PBFZZ	4820-00-789-0417	234A4	58553	.VALVE, PURGE.....	EA	1
4	12	PAFZZ	5310-00-079-1967	AN924-4J	88044	.NUT, PLAIN, HEXAGON.....	EA	1
4	13	PAFZZ	4730-00-530-6115	AN833-4J	88044	.ELBOW, UNION.....	EA	1
4	14	PAFZZ	4730-00-800-3554	MS51531B4S	96906	.NUT, FLARE.....	EA	1
4	15	PAFZZ	4730-00-629-0868	NS51533B4S	96906	.SLEEVE, COMPRESSION.....	EA	1
4	16	XBFZZ		3-904V747-75	02697	.PACKING, PREFORMED.....	EA	1
4	17	PBFZZ		1200D0202	51913	BEAKER, GRADUATED.....	EA	1



TS5-4130-235-23P/5

Figure 5. Electrical System

TS5-4130-235-23P/5

(1) ILLUSTRATION		(2)	(3)	(4)	(5)	(6) DESCRIPTION	(7)	(8)
(a) FIG NO.	(b) ITEM NO.	SMR CODE	NATIONAL STOCK NUMBER	PART NUMBER	FSCM	USABLE ON CODE	U/M	QTY INC IN UNIT
						GROUP 05 - ELECTRICAL SYSTEM		
5	1	PAFZZ	5310-00-934-9761	MS35649-264	96906	NUT, PLAIN, HEXAGON.....	EA	8
5	2	PAFZZ	5310-00-929-6395	MS35338-136	96906	WASHER, LOCK.....	EA	4
5	3	PAFZZ	5310-00-054-0041	NAS620C6L	80205	WASHER, FLAT.....	EA	4
5	4	XBFZZ		1200-C-0153	51913	COVER, TERMINAL.....	EA	1
5	5	XBFZZ		B-141	76530	TERMIINAL, STRIP.....	EA	1
5	6	XBFZZ		MSB-141	76530	MARKER, STRIP.....	EA	1
5	7	PAFZZ	5305-00-054-6659	MS51957-35	96906	SCREW, CAP, HEXAGON HEAD.....	EA	4
5	8	PAFZZ	6240-00-682-3413	B2A	72619	LAMP.....	EA	1
5	9	XBFZZ		95-0463-0931-311	72619	LAMP ASSEMBLY.....	EA	1
5	10	PAFZZ	5930-00-615-9376	MS35059-21	96906	SWITCH.....	EA	1
5	11	PAFZZ	5925-00-842-7298	MS24509-15	96906	CIRCUIT BREAKER.....	EA	1
5	12	PAFZZ	5935-01-012-3081	WC596/11-2	81348	CONNECTOR, ELECTRICAL.....	EA	1
5	13	PAFZZ	5305-00-054-6656	MS51957-32	96906	SCREW, MACHINE.....	EA	2
5	14	PAFZZ		SO-16-3	70903	CONDUCTOR.....	FT	15
5	15	XBFZZ		NO. 112	74545	CORD, GRIP.....	EA	1
5	16	PBFZZ	5935-01-005-3579	WC596/13	81348	CONNECTOR, PLUG, ELECTRICAL.....	EA	1
5	17	PAFZZ	5310-00-934-976E	MS35650-304	96906	NUT, PLAIN, HEXAGON.....	EA	2
5	18	PAFZZ	5310-00-167-0812	AN960C10L	88044	WASHER, FLAT.....	EA	2
5	19	PAFZZ	5305-00-059-3661	MS51958-65	96906	SCREW, MACHINE.....	EA	2
5	20	XBFZZ		1200C0155	51913	SHIELD, ELECTRICAL.....	EA	1
5	21	XBFZZ		NAS1715CT-10N	80205	CLAMP, HOSE.....	EA	1
5	22	XBFZZ		NAS1715CT-4N	80205	CLAMP, HOSE.....	EA	1
5	23	XBFZZ		TYPE 425	26066	TAPE, ALUMINUM.....	EA	1
5	24	XBFZZ		1200D0127	51913	INSULATION, TANK.....	EA	1
5	25	XBFZZ		1200R0151	51913	INSULATION, LOWER.....	EA	1
5	26	PBFZZ		120000120	51913	HEATER, TANK.....	EA	1
5	27	PBFZZ		1200D0502-1	51913	HARNESS ASSEMBLY, ELECTRICAL.....	EA	1
5	28	PBFZZ		1200D0502-2	51913	HARNESS ASSEMBLY, ELECTRICAL.....	EA	1

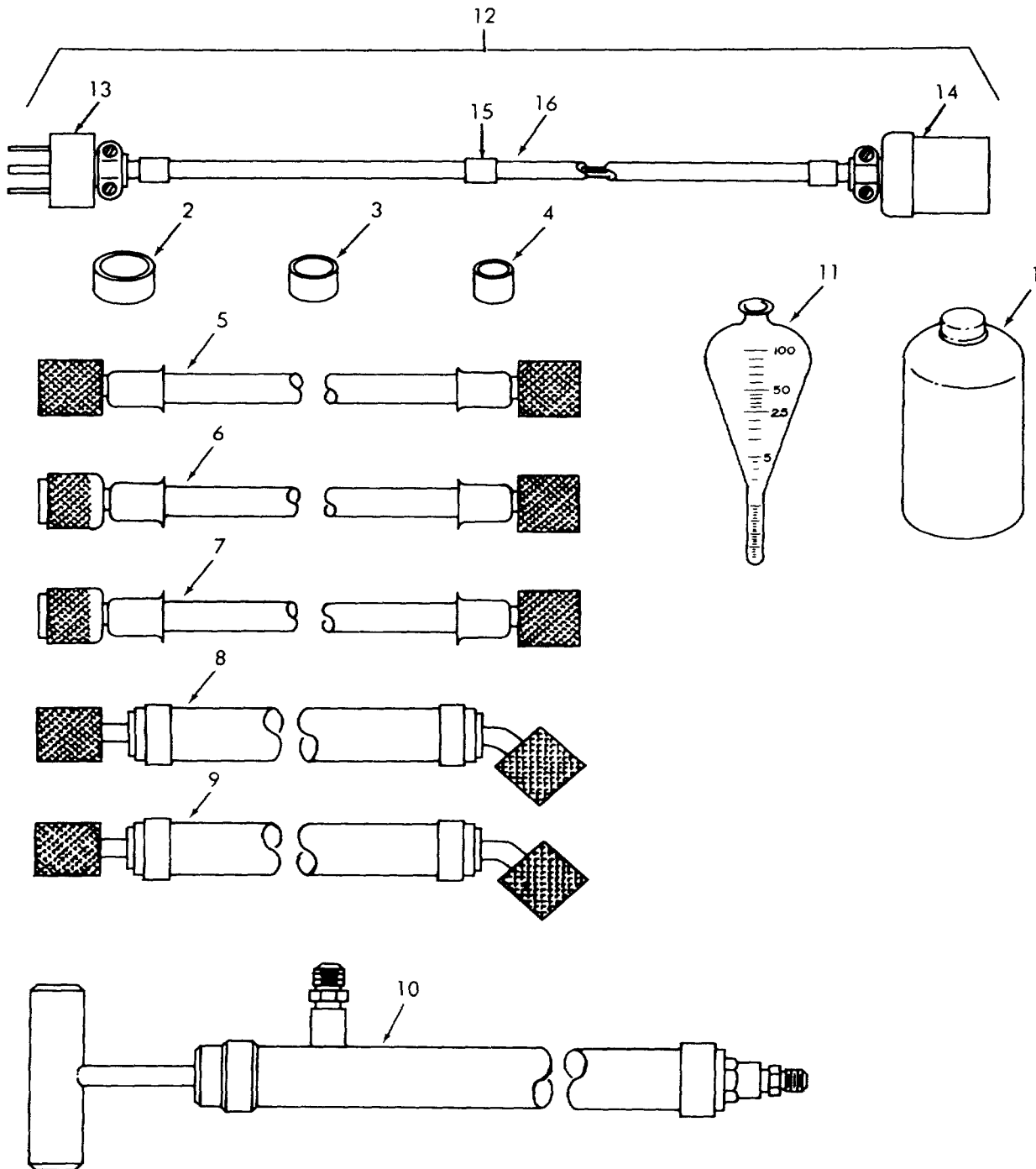


Figure 6. Accessories

(1) ILLUSTRATION		(2)	(3)	(4)	(5)	(6) DESCRIPTION	(7)	(8)
(a) FIG NO.	(b) ITEM NO.	SMR CODE	NATIONAL STOCK NUMBER	PART NUMBER	FSCM	USABLE ON CODE	U/M	QTY INC IN UNIT
						GROUP 06 - ACCESSORIES		
6	1	PAFZZ	9150-00-273-8663	1407K11	64484	OIL, DUO-SEAL .....	EA	1
6	2	PAFZZ	5330-01-017-7163	CH20-4	11284	GASKET .....	EA	10
6	3	PAFZZ	5330-01-064-7651	CH11	11284	GASKET .....	EA	10
6	4	PAFZZ	5330-01-064-7650	CH80	11284	GASKET .....	EA	10
6	5	PAFZZ	4720-01-065-9361	1200C0207	51913	HOSE, CHARGING .....	EA	1
6	6	PAFZZ		1200C0206-1	51913	HOSE, CHARGING .....	EA	2
6	7	PAFZZ	4720-01-066-0954	1200C0206-2	51913	HOSE, CHARGING .....	EA	1
6	8	PAFZZ		1200C0208-1	51913	HOSE, VACUUM .....	EA	1
6	9	PAFZZ	4720-01-065-1876	1200C0208-2	51913	HOSE, VACUUM .....	EA	1
6	10	PAPZZ	4320-01-071-8090	1200C0126	51913	PUMP OIL .....	BA	1
6	11	PAFZZ		21119-001	08474	TUBE, CENTIFUGE .....	EA	1
6	12	PBFZZ	6150-01-078-4794	1200-C-0501	51913	CABLE ASSEMBLY, EXTENTION .....	EA	1
6	13	PBFZZ	5935-01-005-3579	WC596/13	91348	.CONNECTOR, PLUG, ELECTRICAL .....	EA	1
6	14	PBFZZ	5935-00-647-3546	5269	j74545	.CONNECTOR, RECEPTACLE, ELECTRICAL .....	EA	1
6	15	XBFZZ		MS3368-1-9A	9690G	.TAG, IDENTIFICATION .....	EA	1
6	16	PBFZZ		SJO-14-3	54910	.CORD, POWER .....	FT	25

## NATIONAL STOCK NUMBER AND PART NUMBER INDEX

STOCK NUMBER	FIG. NO.	ITEM NO.	STOCK NUMBER	FIG. NO.	ITEM NO.
4130-00-001-8000	2	37	5935-00-647-3546	6	14
5310-00-043-0520	1	33	5340-00-680-4375	1	46
5310-00-043-0520	3	50	6240-00-682-3411	5	7
5310-00-054-0041	1	9	4730-00-698-4034	3	23
5310-00-054-0041	5	3	4730-00-698-4034	3	35
5305-00-054-5647	2	48	4730-00-720-0102	2	6
5305-00-054-5647	3	48	4822-00-789-0417	4	5
5305-00-054-6651	1	7	4820-00-769-0417	4	11
5305-00-054-6656	5	13	4730-00-800-3554	4	8
5305-00-054-6659	5	7	4730-00-800-3554	4	14
5305-00-054-6670	3	25	4730-00-814-5360	2	13
5305-00-059-3659	1	30	4730-00-816-7753	2	62
5305-00-059-3659	2	4	4730-00-810-5201	2	44
5305-00-059-3659	2	11	7510-00-836-9902	2	47
5305-00-059-3659	2	66	5925-00-842-7298	5	11
5305-00-059-3661	1	14	5310-00-844-5948	2	74
5305-00-059-3661	2	25	5310-00-846-5948	1	21
5305-00-059-3661	2	35	5310-00-846-5948	3	44
5305-00-059-3661	4	4	5310-00-880-5975	3	5
5305-00-059-3661	5	19	8030-00-903-6566	1	4
9305-00-059-5432	1	37	5330-00-929-6395	1	8
5305-00-059-5432	3	40	5310-00-929-6395	5	2
7510-00-074-5122	3	21	5310-00-933-8119	3	4
5310-00-079-1967	4	6	5310-00-933-8120	1	18
5310-00-079-1967	4	12	5310-00-933-8120	1	28
4730-00-088-8666	2	27	5310-00-933-8120	2	2
5305-00-080-9485	1	1	5310-00-933-8120	2	10
4820-00-102-9739	3	18	5310-00-933-8120	2	32
9320-00-141-7168	1	48	5310-00-933-8120	2	67
5310-00-167-0812	1	19	5310-00-933-8120	3	12
5310-00-167-0812	1	29	5310-00-933-3120	4	2
53] 0-00-167-0812	2	3	5310-00-933-8121	1	34
5310-00-167-0812	2	24	5310-00-933-8121	3	41
5310-00-167-0812	2	33	5310-00-934-9757	3	3
5310-00-167-0812	2	68	5310-00-934-9761	5	1
5310-00-167-0812	3	13	5310-00-934-9765	1	17
5310-00-167-0812	4	3	5310-00-934-9765	1	27
5310-00-167-0812	5	18	5310-00-934-9765	2	1
5325-00-171-4692	1	6	5310-00-934-9765	2	9
4730-00-189-2737	2	53	5310-00-934-9765	2	31
4730-00-189-2739	2	14	5310-00-934-9765	3	11
4730-00-189-2739	2	21	5310-00-934-9765	4	1
4730-00-189-2739	2	43	5310-00-934-9765	5	17
4730-00-189-2739	2	64	5930-00-945-1823	2	60
4730-00-189-2739	3	31	5310-00-974-6623	1	23
4730-00-109-2742	3	20	5310-00-974-6623	3	38
5310-00-205-8924	1	35	4730-00-988-9139	2	46
5310-00-205-8924	3	42	4730-00-988-9139	3	17
5306-00-226-4824	1	39	5305-00-989-7434	3	14
5306-00-226-4824	3	37	5340-00-997-2964	2	65
5306-00-226-4827	1	22	5935-01-005-3579	5	16
5306-00-226-4827	3	43	5935-01-005-3579	6	13
5306-00-226-4830	2	72	4820-01-007-3280	2	23
4730-00-254-6450	3	16	4820-01-007-2320	2	39
4730-00-263-6460	2	22	593S-01-012-3081	5	12
4730-00-263-6460	2	40	6685-01-012-3286	2	7
4730-00-263-6472	3	15	6685-01-014-8703	2	59
9150-00-273-8663	6	1	5330-01-017-7163	6	2
4730-00-277-7542	3	19	4810-01-024-0134	3	29
4730-00-288-9438	2	26	4130-01-040-8130	3	47
4730-00-288-9438	3	33	6685-01-043-2408	3	2
4730-00-409-3903	2	50	5305-01-053-5003	2	70
5340-00-419-7847	2	36	5305-01-053-5003	3	34
4730-00-421-9430	3	28	5340-01-054-6090	1	45
5305-00-477-0120	1	13	5330-03-064-7650	6	4
5306-00-514-3010	2	12	5330-01-064-7651	6	3
4730-00-530-6115	4	7	4820-01-065-1783	1	43
4730-00-530-6115	4	13	4720-01-065-1876	6	9
4820-00-614-5715	2	38	4720-01-065-9361	6	5
5930-00-615-9376	5	10	4720-01-066-0954	6	6
4730-00-629-0868	4	9	4320-01-071-8890	6	10
4730-00-629-0868	4	15	6150-01-078-4794	6	12
7510-00-634-2941	2	54			

PART NUMBER	FSCM	FIG. NO.	ITEM NO.	PART NUMBER	FSCM	FIG. NO.	ITEM NO.
AN227-48	88044	1	6	AN32-8J	88044	3	23
AN53OC6-4	88044	1	1	AN833-4J	88044	4	7

SECTION IV.

NATIONAL STOCK NUMBER AND PART NUMBER INDEX

PART NUMBER	FSCM	FIG. NO.	ITEM NO.	PART NUMBER	FSCM	FIG. NO.	ITEM NO.
AN833-4J	88044	4	13	MS51861-46C	96906	1	13
AN924-4J	88044	4	6	MS51957-13	96906	2	48
AN924-4J	88044	4	12	MS51957-13	96906	3	48
AN924-8J	88044	3	22	MS51957-27	96906	1	7
AN960C10L	88044	1	19	MS51957-32	96906	5	13
AN960C10L	88044	1	29	MS51957-35	96906	5	7
AN960C10L	88044	2	3	MS51957-45	96906	3	25
AN960C10L	88044	2	24	MS51958-63	96906	1	30
AN960C10L	88044	2	33	MS51958-63	96906	2	4
AN960C10L	88044	2	68	MS51958-63	96906	2	11
AN960C10L	88044	3	13	MS51958-63	96906	2	66
AN960C10L	88044	4	3	MS51958-65	96906	1	14
AN960C10L	88044	5	18	MS51958-65	96906	2	25
AN960C416L	88044	1	35	MS51958-65	96906	2	35
AN960C416L	88044	3	42	MS51958-65	96906	4	4
A1063	96195	2	15	MS51958-65	96906	5	19
A337	41947	2	26	MS51958-66B	96906	2	70
A4624	41947	2	6	MS51958-66B8	96906	3	34
A4994	41947	2	62	MS51958-82	96906	1	37
A5052	41947	2	14	MS51958-82	96906	3	40
A5052	41947	2	64	MS90728-31	96906	1	39
BENHAR1151	74103	3	9	MS90728-31	96906	3	37
B-412-61	96195	2	51	MS90728-34	96906	1	22
B-531-406	96195	2	20	MS90728-34	96906	3	43
B2A	72619	5	8	MS90728-37	96906	2	72
B400-61-4AN	02570	2	50	NAS1713D32N	80205	7	36
B600R1-6	02570	2	16	NAS1713D42N	80205	2	5
B810-61-8AN	02570	2	42	NAS1713D42N	80205	2	57
CH11	11284	6	3	NAS1715C-10N	80205	5	21
CH20	11284	6	2	NAS1715CT-4N	80205	5	22
CH80	11284	6	4	NAS620C6L	80205	1	9
E1-6B	58553	3	33	NAS620C6L	80205	5	3
E3-4B	58553	2	58	NAS620C8L	80205	3	5
E3-6B	58553	3	30	NO.112	74545	5	15
MILP26514CL2TYP1	81349	1	3	WRC801	04399	3	2
MILR6130TYPE1CLASSB	81349	1	48	NS4-10	58553	3	20
MS21322-36	96906	2	65	NS4-4	58553	2	53
MS21332-36	96906	3	35	PPP-T-60	81348	3	21
MS21919-DH6	96906	2	12	PPP-T-66	81348	2	54
MS24509-15	96906	5	11	P1007	96195	1	21
MS3368-1-9A	96906	6	15	P1007	96195	2	74
MS35059-21	96906	5	10	P1007	96195	3	44
MS35207-263	96906	3	14	P70CA1	50831	2	60
MS35338-136	96906	1	8	QS800M4H	08484	3	28
MS35338-136	96906	5	2	RTV732	71984	1	4
MS35338-137	96906	3	4	R1BA	58553	2	41
MS35338-138	96906	1	18	S0-16-3	70903	5	14
MS35338-138	96906	1	28	T-8	87698	2	37
MS35338-138	96906	2	2	TC105A	59730	1	10
MS35338-138	96906	2	10	TDE-3S	87698	2	45
MS35338-138	96906	2	32	TYPE425	26066	5	23
MS35338-138	96906	2	67	TY24M	59730	3	10
MS35338-138	96906	3	12	T1-6B	41947	2	27
MS35338-138	96906	4	2	U1-6B	58553	2	75
MS35338-139	96906	1	34	WCBT0R1	13476	2	18
MS35338-139	96906	3	41	WC596/11-2	81348	5	12
MS35338-140	96906	1	23	WC596/13	81348	5	16
MS35338-140	96906	3	38	WC596/13	81348	6	13
MS35649-264	96906	5	1	W1315	41947	3	19
MS35649-282	96906	3	3	W2009	41947	2	44
MS35650-304	96906	1	17	W2022	41947	3	16
MS35650-304	96906	1	27	W4000	41947	2	22
MS35650-304	96906	2	1	W4000	41947	2	40
MS35650-304	96906	2	9	W4006	41947	3	15
MS35650-304	96906	2	31	ZZT831TYPEV1CLASS6	81348	3	27
MS36350-304	96906	3	11	10Z1-323B	14519	3	6
MS35650-304	96906	4	1	1041	33342	2	61
MS35650-304	96906	5	17	1200B0130	51913	2	55
MS35650-3252	96906	1	33	1200B0134	51913	1	444
MS35650-3252	96906	3	50	1200B0138	51913	2	71
MS35793-1	96906	1	41	1200B0140	51913	3	49
MS35822-10D	96906	1	45	1200C0103	51913	1	15
MS35872-3	96906	2	21	1200C0104	51913	1	16
MS35872-3	96906	2	43	1200C0105	51913	1	5
MS35872-3	96906	3	31	1290C0106	51913	1	24
MS51531B4S	96906	4	8	1200C0108	51913	3	45
MS51531B4S	96906	4	14	1200C0109	51913	4	4
MS51533B4S	96906	4	9	1200C0110	51913	3	8
MS51533B4S	96906	4	15	1200C0111	51913	3	7

SECTION IV.

NATIONAL STOCK NUMBER AND PART NUMBER INDEX

PART NUMBER	FSCM	FIG. NO.	ITEM NO.	PART NUMBER	FSCM	FIG. NO.	ITEM NO.
1200C0112	51913	3	46	1200F0001-81	51913	1	43
1200C0118	51913	3		1200R0100	51913	1	
1200C0122	51913	1	40	1200R0102	51913	1	
1200C0123	51913	1	36	1200R0107	51913	1	11
1209C0125	51913	4		1200R0113	51913	1	47
1200C0126	51913	6	10	1200R0124	51913	2	
1200C0131	51913	2	52	1200R0132	51913	3	
1200C0135	51913	1	2	1200R0133	51913	1	38
1200C0137	51913	2	73	1200R0145	51913	1	12
1223C0139	51913	2	63	1200R0151	51913	5	25
120EC0147	51913	2	17	1200R0200	51913	2	
1200C0153	51913	5	4	1200R0205	51913	1	
1200C0154	51913	3	32	1407K11	64484	6	1
1201C0155	51913	2	19	21119-001	08474	6	11
1200C0155	51919	5	20	216-10S	58553	3	18
1203C3157	51913	3	36	234A4	58553	4	5
1200C0206-1	51913	6	6	234A4	58553	4	11
1230C0206-2	51913	6	7	234A6	58553	2	23
1200C0207	51913	6	5	234A6	58553	2	39
1200C0208	51913	6	8	25-1009AC02B30-0-60	38056	2	59
1200C0208-2	51913	6	9	25-1009AC02B30X150PSIG	04146	2	7
1200C0209	51913	2		25-1009AC02B30X150PSIG	04146	2	56
1200C0210	51913	2	8	3	82240	1	46
1200C0211	51913	1	25	3-904V747-75	02697	4	10
1200C0212	51913	2	34	3-904V747-75	02697	4	16
1200C0501	51913	6	12	3001-125	58553	2	30
1200D0101	51913	2	29	3600X4	79470	2	28
1200D0114	51913	1	26	4-D8TX	30780	3	26
1200D0115	51913	1	20	41-1734	64484	3	79
1200D0117	51913	3	39	471	76381	2	47
1200D0120	51913	5	26	5269	74545	6	14
1200D0121	51913	3	1	600-9	02570	2	13
1200D0127	51913	5	24	603-1-2X1-4	12168	2	46
1200D0136	51913	2	69	603-1-2X1-4	12168	3	17
1200D0201	51913	2		6209-6-4-2	20282	2	45
1200D0202	51913	4	17	6209-8-4-2	20282	3	24
1200D0203	51913	1	31	8-141	76530	5	5
1200D0204	51913	1	32	802A6S	58553	2	38
1200D0502-1	51913	5	27	8810-B	64484	3	47
1200D0502-2	51913	5	28	95-0463-0931-311	72619	5	9
1200F0001-80	51913	1	42				



By Order of the Secretary of the Army:

**E. C. MEYER**  
*General, United States Army*  
*Chief of Staff*

Official:

**J. C. PENNINGTON**  
*Major General, United States Army*  
*The Adjutant General*

DISTRIBUTION:

To be distributed in accordance with DA Form 12-25C, Organizational maintenance requirements for Refrigeration equipment.

\* U.S GOVERNMENT PRINTING OFFICE 1979--665134/1449

# The Metric System and Equivalents

## Linear Measure

1 centimeter = 10 millimeters = .39 inch  
 1 decimeter = 10 centimeters = 3.94 inches  
 1 meter = 10 decimeters = 39.37 inches  
 1 dekameter = 10 meters = 32.8 feet  
 1 hectometer = 10 dekameters = 328.08 feet  
 1 kilometer = 10 hectometers = 3,280.8 feet

## Weights

1 centigram = 10 milligrams = .15 grain  
 1 decigram = 10 centigrams = 1.54 grains  
 1 gram = 10 decigrams = .035 ounce  
 1 dekagram = 10 grams = .35 ounce  
 1 hectogram = 10 dekagrams = 3.52 ounces  
 1 kilogram = 10 hectograms = 2.2 pounds  
 1 quintal = 100 kilograms = 220.46 pounds  
 1 metric ton = 10 quintals = 1.1 short tons

## Liquid Measure

1 centiliter = 10 milliliters = .34 fl. ounce  
 1 deciliter = 10 centiliters = 3.38 fl. ounces  
 1 liter = 10 deciliters = 33.81 fl. ounces  
 1 dekaliter = 10 liters = 2.64 gallons  
 1 hectoliter = 10 dekaliters = 26.42 gallons  
 1 kiloliter = 10 hectoliters = 264.18 gallons

## Square Measure

1 sq. centimeter = 100 sq. millimeters = .155 sq. inch  
 1 sq. decimeter = 100 sq. centimeters = 15.5 sq. inches  
 1 sq. meter (centare) = 100 sq. decimeters = 10.76 sq. feet  
 1 sq. dekameter (are) = 100 sq. meters = 1,076.4 sq. feet  
 1 sq. hectometer (hectare) = 100 sq. dekameters = 2.47 acres  
 1 sq. kilometer = 100 sq. hectometers = .386 sq. mile

## Cubic Measure

1 cu. centimeter = 1000 cu. millimeters = .06 cu. inch  
 1 cu. decimeter = 1000 cu. centimeters = 61.02 cu. inches  
 1 cu. meter = 1000 cu. decimeters = 35.31 cu. feet

## Approximate Conversion Factors

To change	To	Multiply by	To change	To	Multiply by
inches	centimeters	2.540	ounce-inches	newton-meters	.007062
feet	meters	.305	centimeters	inches	.394
yards	meters	.914	meters	feet	3.280
miles	kilometers	1.609	meters	yards	1.094
square inches	square centimeters	6.451	kilometers	miles	.621
square feet	square meters	.093	square centimeters	square inches	.155
square yards	square meters	.836	square meters	square feet	10.764
square miles	square kilometers	2.590	square meters	square yards	1.196
acres	square hectometers	.405	square kilometers	square miles	.386
cubic feet	cubic meters	.028	square hectometers	acres	2.471
cubic yards	cubic meters	.765	cubic meters	cubic feet	35.315
fluid ounces	milliliters	29.573	cubic meters	cubic yards	1.308
pints	liters	.473	milliliters	fluid ounces	.034
quarts	liters	.946	liters	pints	2.113
gallons	liters	3.785	liters	quarts	1.057
ounces	grams	28.349	liters	gallons	.264
pounds	kilograms	.454	grams	ounces	.035
short tons	metric tons	.907	kilograms	pounds	2.205
pound-feet	newton-meters	1.356	metric tons	short tons	1.102
pound-inches	newton-meters	.11296			

## Temperature (Exact)

°F	Fahrenheit temperature	5/9 (after subtracting 32)	Celsius temperature	°C
----	------------------------	----------------------------	---------------------	----

RECOMMENDED CHANGES TO EQUIPMENT TECHNICAL PUBLICATIONS

**SOMETHING WRONG WITH THIS PUBLICATION?**



THEN... JOT DOWN THE DOPE ABOUT IT ON THIS FORM, CAREFULLY TEAR IT OUT, FOLD IT AND DROP IT IN THE MAIL!

FROM: (PRINT YOUR UNIT'S COMPLETE ADDRESS)

DATE SENT

PUBLICATION NUMBER

PUBLICATION DATE

PUBLICATION TITLE

BE EXACT... PIN-POINT WHERE IT IS

PAGE NO.

PARA-GRAPH

FIGURE NO.

TABLE NO.

IN THIS SPACE TELL WHAT IS WRONG AND WHAT SHOULD BE DONE ABOUT IT:

TEAR ALONG PERFORATED LINE

PRINTED NAME, GRADE OR TITLE, AND TELEPHONE NUMBER

SIGN HERE:

DA FORM 2028-2  
JUL 79

PREVIOUS EDITIONS ARE OBSOLETE.

P.S.—IF YOUR OUTFIT WANTS TO KNOW ABOUT YOUR RECOMMENDATION MAKE A CARBON COPY OF THIS AND GIVE IT TO YOUR HEADQUARTERS.

